

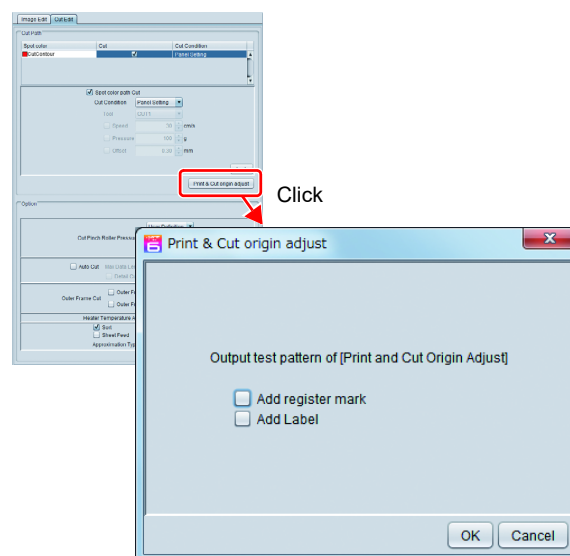
Cutting out Data without Register Marks (PC ORIGIN OFFSET)

Adjust the misalignment between printing and cutting by Print & Cut.

Print the adjustment pattern from RasterLink6, and enter the adjustment values to the printer.

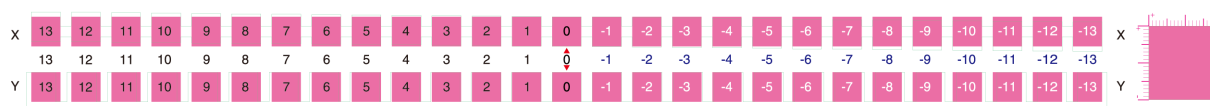
For Print & Cut without registration marks

- 1 Set the machine to "REMOTE" status.
- 2 Set the print conditions (profile, cut conditions) of the job that you want to print using RasterLink6.
- 3 Click [print & cut Origin adjust] in the [Cut edit] tab of RasterLink6.
 - Click [OK] to print the adjustment pattern.



- 4 When the pattern is printed, press **(FUNC1) (ADJUST)** and select "PC ORIGIN OFFSET".

- When the media is fed, peel the cut part of the pattern, and check the adjustment values



X enlarged



Enter the value of the position that has the least misalignment between top and bottom
The example here shows that -4 has the least misalignment, so enter "-4".

Y enlarged



Enter the value of the position that has the least misalignment between right and left
The example here shows that 2 has the least misalignment, so enter "2".

- 5 Enter the adjustment values

- When you press the [ENTER] key, the media return, and the operation is completed.

Important!

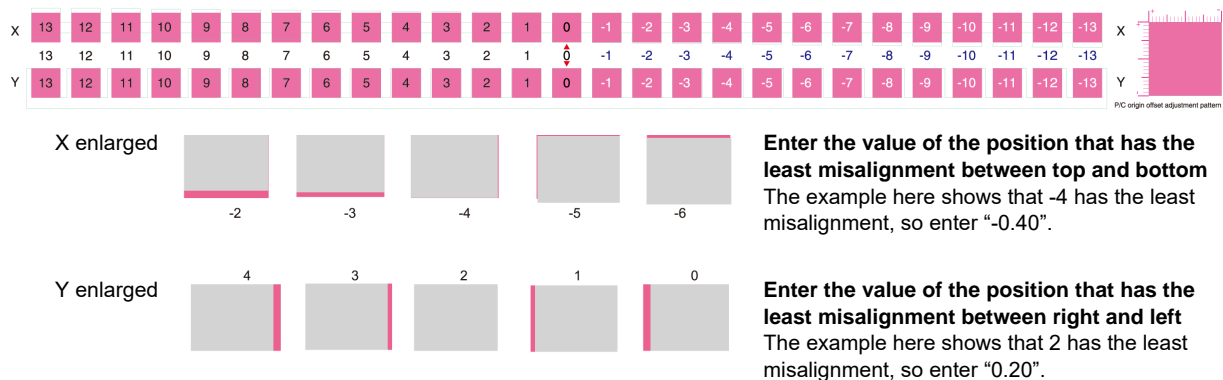
- When printing the data that has a different resolution (Y), make adjustment again. (Save an adjustment value per resolution)
- You cannot print adjustment patterns with multiple conditions continuously, and enter the adjustment values. Make sure you print and set one adjustment value per condition.



- To adjust again, perform a test cut once, and then adjust from step 1.

For Print & Cut with registration marks

- 1** Set the machine to "REMOTE" status.
- 2** Set the print conditions (profile, cut conditions) of the job that you want to print using RasterLink6.
- 3** Click [print & cut Origin adjust] in the [Cut edit] tab of RasterLink6.
- 4** Select "Add registration mark".
 - Click [OK] to print the adjustment pattern.
- 5** When the pattern is printed, press **(FUNC1) (ADJUST)** and select "TP OFFSET".
 - When the media is fed, peel the cut part of the pattern, and check the adjustment values (The actual pattern has registration marks.)



- 6** Enter the adjustment values
 - When you press the [ENTER] key, the media return, and the operation is completed.

Setting the Scale Adjust

When printing and cutting without registration marks, adjustment is performed if the misalignment in the scanning direction occurs between the left and right edges of the media.
When you perform scale adjustment, adjustment is performed automatically.

- 1** Set a media (P.2-4)
 - Set the white media for printing the correction pattern.
 - 2** Press the **(FUNC1) (MENU)** ➔ **(FUNC3) (>>)** ➔ **(ENTER)** key in LOCAL.
 - Cutting MENU will be displayed.
 - 3** Select [Maintenance], press **(▲)** **(▼)** to select the "SCALE ADJUST", and press the **(ENTER)** key.
 - 4** After the confirmation screen appears, press the **(ENTER)** key.
 - After the correction pattern is printed, the pattern is automatically corrected by detecting the registration mark.
- Important!** Adjust the resolution to match the resolution you want to print (Y540dpi or Y360/720dpi).